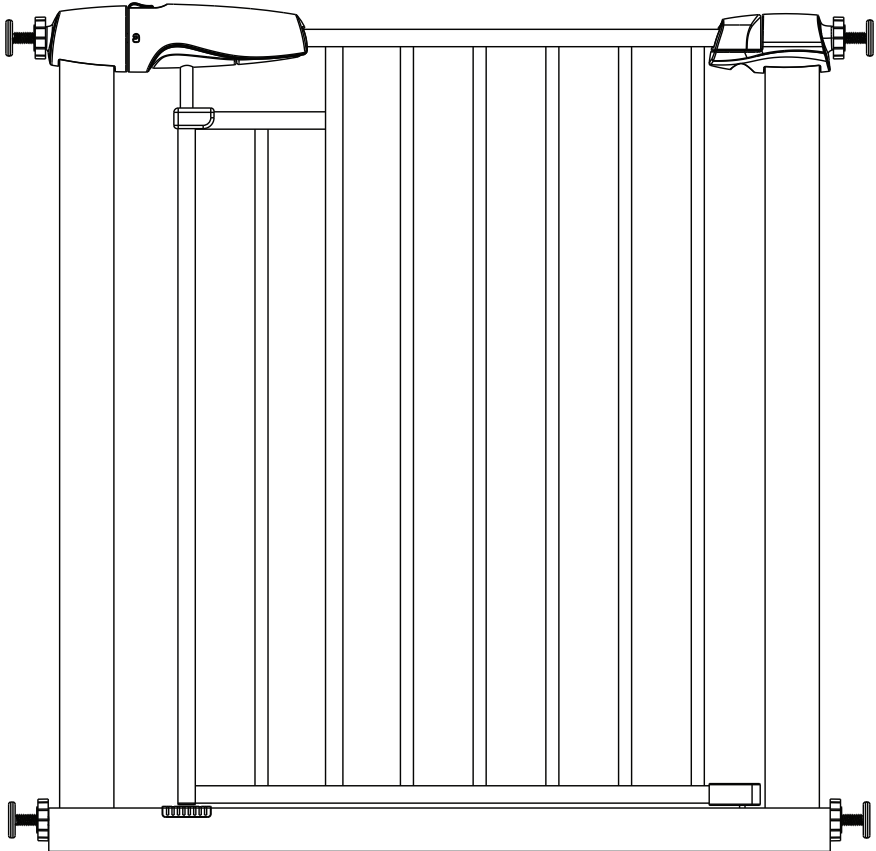




# **Freedom Maglock Auto Close Stair Gate**

## **Easy Installation Guide**



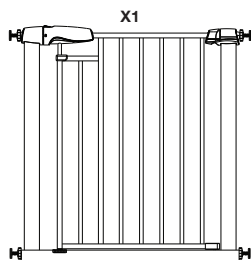
BSR11822

**IMPORTANT KEEP FOR FUTURE REFERENCE**

[www.callowesse.co.uk](http://www.callowesse.co.uk)

Thank you for choosing our stair gate. Please read the instructions carefully before setting up the gate and keep it for future reference.

## PARTS INCLUDED IN THE BOX



BSR11822

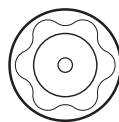


X4  
Fitting and  
Width adjusters.

## EXTRAS:



X4  
Wall Cup  
(only to be used  
if using screws)



X2  
Wall Cup Pressure fit  
(with rubber protection  
for extra grip)



X4  
Adhesive Pad  
(for use with wall cup)



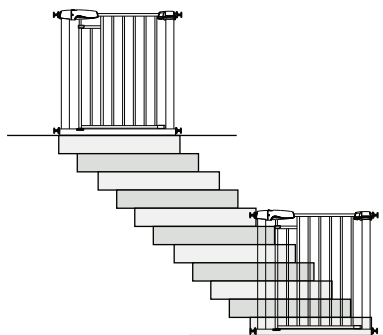
X4  
Screws  
(for use with screw  
fit wall cup)

## WHERE TO INSTALL THE STAIR GATE

This stair gate is suitable for use indoors such as doorways, stairs, hallways etc.

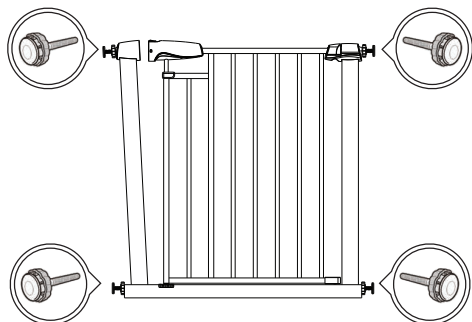
### Note:

1. This stair gate is suitable to be installed in locations with openings between 76 to 83cm wide. If you need to set it up in a wider opening please purchase additional extension parts. (Information about extension parts can be found on the back of this user manual)
2. Make sure the set up surface is flat, strong and stable.
3. Please ensure the width adjusters are set up on a surface of at least 3cm wide.
4. Gate must be installed touching the floor leaving no gap to prevent your child from going under it.

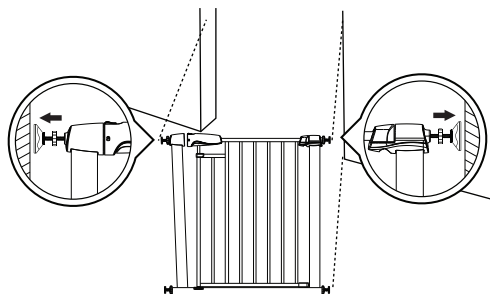


## OPTION A: PRESSURE FIT WALL CUPS

1. Insert the 4 width adjusters in to the gate sides (top and bottom).

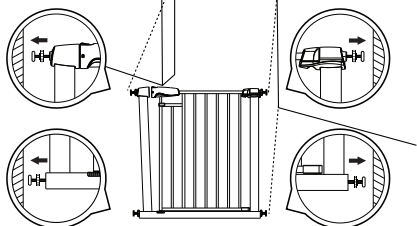


2. Ensure the base of the stair gate is on the floor leaving no gap. Place the 2x Pressure fit wall cups against the width adjusters. (Optional)

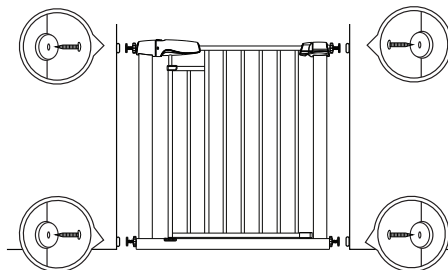


## OPTION B: SCREW FIT WALL CUPS

1. Add the adhesive pads to the back of the wall cups then place them over the width adjusters. Place the gate in your chosen area. Screw the width adjusters to align and secure the wall cups.



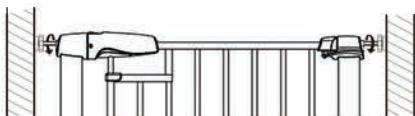
2. Loosen and remove the gate and screw the wall cups using the 4x screws provided.



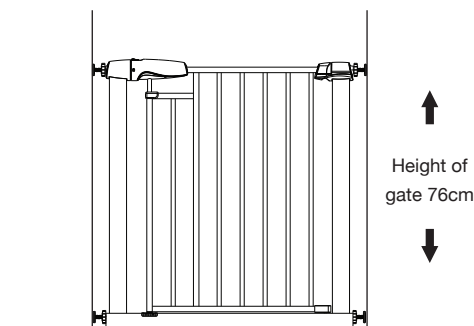
3. Screw the bottom adjusters, let the gate stand vertical.



4. Screw the top adjusters, until the magnetic lock closes (you will hear a click).



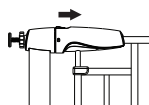
5. Check the width adjusters, make sure the gate is tightly secured.



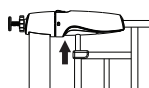
## GATE USAGE INSTRUCTIONS

### How to open:

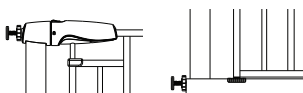
Slide button inwards and hold then squeeze handle to unlock.



1. Slide button inwards and hold

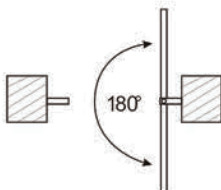


2. Squeeze handle



Double locking (top and bottom)

2 way opening: gate can be opened in any direction



The gate will stop at 90°



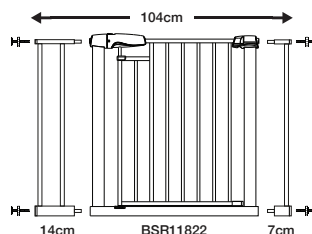
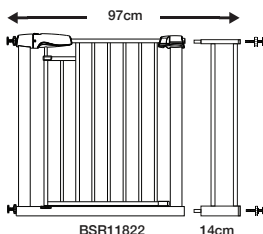
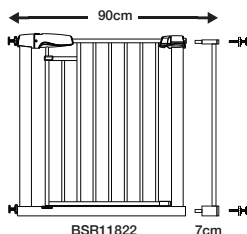
The gate will automatically lock when closed

(you will hear a click)

# STAIR GATE EXTENSIONS COMBINATIONS

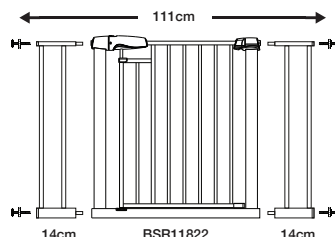
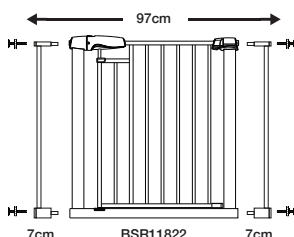
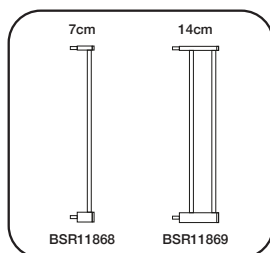
(Only to be applied if the opening is wider than 83cm)

DO NOT INSTALL MORE THAN 2 EXTENSION PARTS ON THE STAIR GATE.  
DO NOT PLACE 2 EXTENSION PARTS ON THE SAME SIDE.



## AVAILABLE EXTENSIONS

(Sold separately)



## WARNING:

- **WARNING** - Read the instructions before installing the stair gate as incorrect installation can cause the gate to fall.
- **WARNING** - This stair gate must not be fitted across windows.
- **WARNING** - The stair gate must be tightly screwed and secured before operation.
- The stair gate is for domestic use only.
- The stair gate has an automatic close and magnetic locking system.
- Stop using the stair gate if your child is able to climb or open it.
- If the stair gate is used at the top of stairs, in order to prevent children climbing down stairs, it should not be positioned below top step.
- If the stair gate is used at the bottom of stairs, in order to prevent children climbing up the stairs, it should not be positioned on the lowest step.
- Ensure the stair gate is correctly installed before use.
- The stair gate is not intended to replace adult supervision.
- Must be fitted between rigid surfaces such as plaster board, timber, brick or metal using the wall cups with the option to scrow the wall cups to the wall for extra grip.
- For use with children up to 24 months of age.